



# Turn Your Students into ₹10–14 LPA Core Engineers

While Others Focus on IT, We Build

**Electrical · Mechanical · Civil · ECE** Industry Experts

127

SKILL GAPS

8

MODULES / BRANCH

100+

HIRING PARTNERS

4

YEAR PROGRAM



## AI-Powered Industry 4.0 Placement System



SKILLIFTT FTMP 4.0



**Electrical Engineering**

Smart Grids · EV · IoT

₹10–14 LPA



**Mechanical Engineering**

Robotics · CAD · Additive Mfg

₹10–14 LPA



**Civil Engineering**

BIM · Smart Cities · GIS · Sustainable

₹10–14 LPA



**ECE – Intelligent Systems**

5G/6G · Edge AI · Embedded · VLSI

₹10–14 LPA



# Why 80% of Core Engineers Earn Below Potential



## The Problem

- Outdated curriculum not aligned with Industry 4.0 demands
- Zero exposure to real tools: IoT, AI, BIM, SCADA, Robotics
- Core engineers stuck at ₹3–4 LPA despite high demand
- No structured skill-tracking or placement readiness system

₹3.5  
LPA



₹10+  
LPA

Possible  
with  
FTMP 4.0

## The Solution

- 4-Year integrated Industry 4.0 program from Year 1
- 127 tracked skill parameters per student, per semester
- AI-driven placement readiness scoring and job matching
- Dedicated modules for Electrical, Mechanical, Civil & ECE

AI & IoT   Robotics   BIM   SCADA  
5G   EV Tech   Smart Mfg

## The Outcome

- Graduates land ₹10–14 LPA core engineering roles
- 100+ industry hiring partners ready to recruit
- Institution gains reputation as top core-engineering college
- Higher enrollment, rankings & long-term institutional value

3x  
Salary  
Growth

4  
Branches  
Covered

127  
Skills  
Tracked

 **Industry 4.0**  
Curriculum Aligned

 **100+**  
Hiring Partners

 **₹10–14 LPA**  
Average Placement  
Target

 **4-Year**  
Integrated  
Program

# Electrical & Mechanical Engineering Modules



## Electrical Engineering

EE TRACK

Focus: Smart Energy &amp; Power Systems

M1

### Smart Grids

AI-driven grid management

M2

### AI Predictive Maintenance

ML-based asset monitoring

M3

### EV Power Electronics

EV charging &amp; drivetrains

M4

### IoT Energy Analytics

Real-time data platforms

M5

### Battery Management

BMS for EV &amp; storage

M6

### Solar & Wind Systems

Renewable integration

M7

### Microgrid Design

Distributed energy systems

M8

### Grid Modernization

Smart infrastructure upgrade



## Mechanical Engineering

ME TRACK

Focus: Automation &amp; Smart Manufacturing

M1

### Generative CAD/CAM

AI-driven design tools

M2

### IoT Condition Monitoring

Predictive factory analytics

M3

### Industrial Robotics

Automation &amp; cobots

M4

### Additive Manufacturing

3D printing &amp; rapid prototyping

M5

### AI Process Optimization

ML-driven efficiency

M6

### Smart Manufacturing

Digital factory systems

M7

### Thermal Systems Design

Advanced heat management

M8

### Industry 4.0 Integration

Full digital twin workflow

# Civil Engineering: Digital Construction & Smart Cities



BIM + Smart Cities

## PROGRAM HIGHLIGHTS

8

Industry  
Modules

₹12+

Avg LPA  
Target

4Yr

Integrated  
Track

BIM

GIS

Revit

AutoCAD

IoT

Smart Cities



## 8 Comprehensive Modules

From BIM Fundamentals to Smart Infrastructure & Sustainability

### M1 BIM Fundamentals

Revit, ArchiCAD, Navisworks

### M2 Smart Cities Planning

Urban IoT & GIS integration

### M3 Sustainable Design

Green building, LEED, net-zero

### M4 Construction 4.0

Drones, AR/VR on-site tech

### M5 IoT Structural Monitoring

Real-time sensor networks

### M6 Digital Twin Infrastructure

Virtual model of physical assets

### M7 AI in Project Management

Scheduling, cost & risk AI

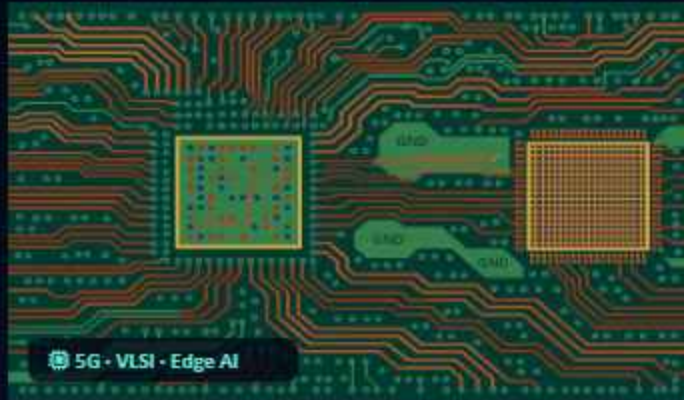
### M8 Water & Environmental Systems

Smart water, waste management



Career Roles: **BIM Engineer, Smart Infrastructure Lead, Urban Tech Planner, Sustainability Consultant**  
— Average ₹10–14 LPA

# ECE: Intelligent Systems & Next-Gen Communication



5G · VLSI · Edge AI

## PROGRAM HIGHLIGHTS

8

Industry  
Modules

₹12+

Avg LPA  
Target

4Yr

Integrated  
Track

5G/6G

VLSI

Edge AI

Embedded

IoT

Cybersecurity



## 8 Comprehensive Modules

From Embedded Systems to AI-Driven Communication &amp; Cybersecurity

### M1 Embedded Systems & RTOS

ARM, FreeRTOS,  
Microcontrollers

### M2 5G/6G Communication

Network protocols, RF design

### M3 VLSI Design

Chip design, Verilog, FPGA

### M4 Edge AI & TinyML

AI inference on-device

### M5 IoT Architecture

Smart sensing, cloud &amp; fog

### M6 Cybersecurity for Systems

Secure hardware &amp; protocols

### M7 Signal & Image Processing

DSP, computer vision, OpenCV

### M8 Autonomous & Drone Systems

UAV, robotics, autonomous  
controlCareer Roles: **Embedded Engineer, 5G RF Engineer, VLSI Design Engineer, Edge AI Developer, IoT Solutions Architect** — Avg ₹10–14 LPA

**3x**  
Salary Growth

# From ₹3.5 LPA to ₹10–14 LPA — Real Transformation



**127**  
Tracked Skill Parameters

**100+**  
Active Hiring Partners

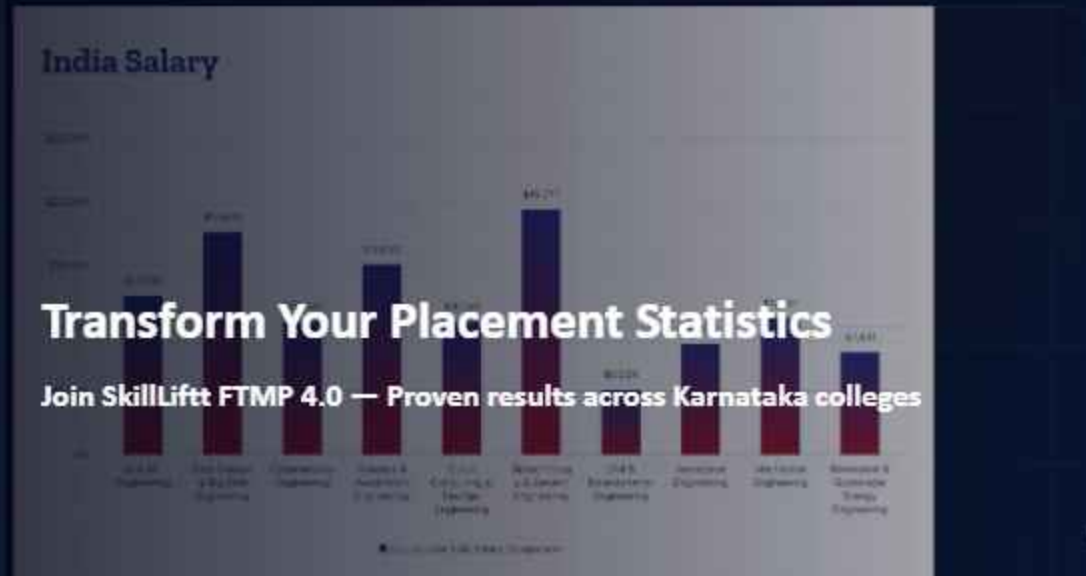
**4 Yrs**  
Integrated Program

**4**  
Core Engineering Branches

**AI-Powered Skill Tracking**  
127 parameters assessed per student each semester, with real-time dashboard for faculty and placement teams.

**100+ Industry Hiring Partners**  
Pre-placed opportunities with core engineering companies across EV, Energy, Infrastructure & Telecom sectors.

**Institutional Brand Uplift**  
Colleges gain rankings boost, higher admissions, and reputation as Industry 4.0 ready engineering schools.





⚡ FTMP 4.0 — INDUSTRY PARTNERSHIP PROGRAM

# Ready to Transform Your Placement Outcomes? Outcomes?

Partner with SkillLiftt and give your students the **unfair advantage** in core engineering careers.  
₹10–14 LPA placements. Proven system. Real results.

⚡ Electrical

⚙️ Mechanical

🏗️ Civil

🎓 ECE

Recognized by,



Book a Free Strategy Session Today



CALL / WHATSAPP  
+91 9071231315



WEBSITE  
[www.skilliftt.com](http://www.skillliftt.com)



BASED IN  
Tiptur, Karnataka, India

## PARTNERSHIP PROCESS

- 1 Free strategy consultation with your placement team
- 2 Customized FTMP 4.0 roadmap for your institution
- 3 Launch program, track skills, connect with hiring partners